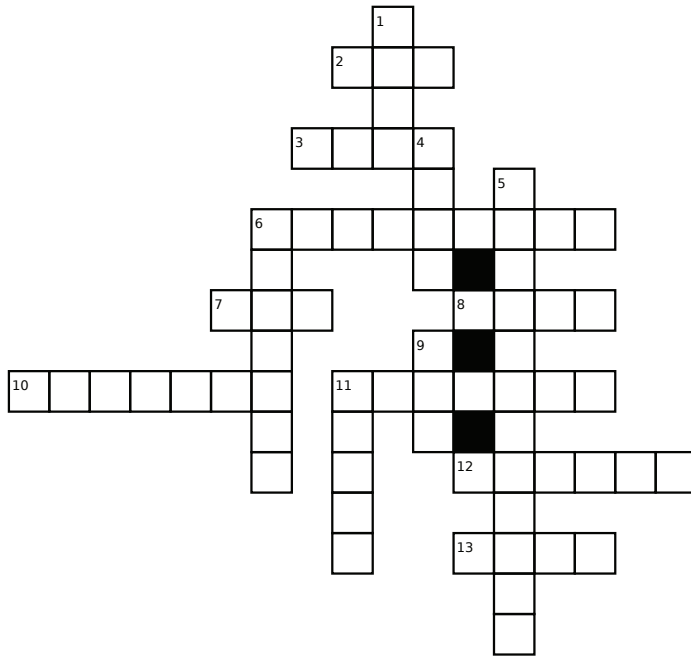
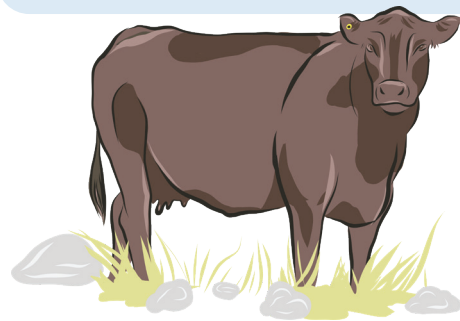


BEEF FACT FIND CROSSWORD



- | | |
|---------|--------------|
| BEEF | GRAZING |
| BULL | HAY |
| CALF | MILK |
| COW | PASTURE |
| CUD | PRODUCERS |
| EAR TAG | PROTEIN |
| FOUR | VETERINARIAN |
| GRASS | |



DOWN

- Name for an adult male who is used for breeding.
- Number of stomachs a cow has.
- A doctor for cattle.
- Beef is a great source of this nutrient.
- The rolled up cut and dried long grasses and other plants used to feed cattle in the winter.
- In the summertime, cows love to eat this.

ACROSS

- Cattle chew on this.
- Name for a baby beef animal.
- Beef _____ work hard to make sure their cows are healthy so they can produce nutritious meat for us.
- Once a young female heifer has had her first calf, she is called this.
- Meat that comes from cows.
- What are the grassy fields that cows graze called?
- What is it called when cattle eat grass in the pasture?
- Farmers use this to identify their cattle.
- What do cows feed their calf until it is about six months old?

RIB TICKLERS

Q: What was the bull doing in the pasture with his eyes closed?

A: Bull-doizin'

All About Beef

STUDENT ACTIVITY BOOKLET

BEEF-IT-UP WORD SEARCH

L	L	U	B	C	O	R	N	A	P	M	N	T	F
E	V	E	T	E	R	I	N	A	R	I	A	N	E
F	R	T	D	E	L	H	D	T	O	L	I	E	R
E	L	U	F	R	E	N	L	O	T	K	D	I	T
E	H	I	T	R	E	R	E	L	E	F	A	O	I
D	E	O	M	L	E	H	I	D	I	L	N	R	L
H	E	S	O	H	U	T	F	E	N	A	A	U	I
R	V	S	T	F	I	C	D	E	U	C	C	M	Z
H	E	A	L	T	H	Y	I	F	D	G	W	I	E
I	E	R	E	M	R	A	F	R	R	U	C	N	R
L	E	G	A	N	R	A	B	A	G	O	C	A	L
E	R	U	T	S	A	P	I	H	W	A	Y	N	O
R	E	T	A	W	D	N	W	A	R	T	S	T	E
Y	A	H	C	A	T	T	L	E	T	B	E	E	F

- | | | | | | |
|-------------|----------|------------|---------|---------|--------------|
| AGRICULTURE | CANADIAN | FARMER | GRAIN | HERD | PROTEIN |
| BARN | CATTLE | FEED | GRASS | HOOF | RUMINANT |
| BEEF | CORN | FEEDLOT | HAY | LEATHER | STRAW |
| BULL | COW | FERTILIZER | HEALTHY | MILK | VETERINARIAN |
| CALF | CUD | FIELD | HEIFER | PASTURE | WATER |

Use the letters left to fill in the blanks to reveal the hidden message:

C _____ E _____ P THE _____ V _____ N _____ N _____ AND
P _____ O _____ E _____ S _____ TH H _____ T _____ F _____ O _____ TO _____ A _____.

TEST YOUR KNOWLEDGE

1. What do farmers use to tell their cattle apart?

- a. Tattoos
- b. RFID button tags
- c. Ear tags
- d. All the above

2. Where do beef cattle spend most of their time?

- a. In a barn
- b. In an enclosed pen
- c. In the outdoors
- d. Both indoors and outdoors

3. Which of these nutrients is found in beef?

- a. Zinc
- b. Iron
- c. Protein
- d. All the above

4. What do we call male beef cattle?

- a. Bulls
- b. Cows
- c. Heifers
- d. Herd

5. Which of these protein foods does not come from beef cattle?

- a. Bacon
- b. Hamburgers
- c. Roasts
- d. Steaks

6. What do cows provide for their calves?

- a. Cud
- b. Milk
- c. Supplements
- d. Water

RIB TICKLERS

Q: How does a farmer count a herd of cows?

A: With a cow-culator!

TRUE OR FALSE

- | | | |
|--|------|-------|
| 1. Cattle graze prairie grasslands the way buffalo did over 150 years ago. | TRUE | FALSE |
| 2. Cows eat grass then poop which provides nutrients for the grass to grow and then be eaten by cows in a balanced nutrient cycle. | TRUE | FALSE |
| 3. Water retention ponds are fenced off to provide clean water for the cattle and create clean wetland habitats for wildlife. | TRUE | FALSE |
| 4. Feed supplements for cattle are mostly made of by-products or products we can't use as humans. | TRUE | FALSE |

RIB TICKLERS

Q: Where do cows go when they want a night out?

A: To the moo-vies!

5. Cows eat mostly grain for most of their life.

TRUE FALSE

6. Grass is tough to digest so cows bring up partly digested grass, called cud, and re chew it.

TRUE FALSE

7. Beef cattle cannot survive outside in our Manitoba winters.

TRUE FALSE

WHO'S WHO?

Beef producer - a farmer that raises beef cattle.

Bull - an adult male used for breeding.

Heifer - a young female less than 2 years old who has not had a calf yet.

Cow - after a female has had a calf she is called a cow.

Calf - a newborn animal.

RIB TICKLERS

Q: What do you call a cow that just had a calf?

A: Decaffeinated

ANSWER KEY

- | | | |
|--------------|-------------|-----------------|
| ACROSS | 1) BULL | 5) VETERINARIAN |
| 2) CUD | 4) FOUR | 6) PROTEIN |
| 3) CALF | 7) COW | 9) HAY |
| 6) PRODUCERS | 8) BEEF | 10) PASTURE |
| 7) COW | 11) GRAZING | 11) GRASS |
| 8) BEEF | 12) EAR TAG | 12) EAR TAG |
| 9) HAY | 13) MILK | 13) MILK |

Crossword Answer Key:

DID YOU KNOW?

To Calve - means to give birth.

Ruminant - an animal with four stomachs like cow, sheep, or goat.

By-products - material left over when food or other items are processed. For example, the seed parts that are left after oil has been removed from canola seed.

Cattle upcycle by-products into high quality protein.

By-products from foods like beer and corn syrup, as well as bruised or wilted produce, are fed to cattle to reduce waste.



BCRC
BEEF CATTLE RESEARCH COUNCIL

RAISE YOUR BEEF IQ
@beefresearch.ca

Beef-It-Up Word Search:

Answer: 'Cattle help the environment and provide us with

healthy food to eat.'

Test Your Knowledge:

1) d. 2) c. 3) d. 4) a. 5) a. 6) b.

True or False:

1) T 2) T 3) T 4) T 5) F 6) T 7) F